

Mount Diablo STATE PARK



Poison Oak
Poison oak can be identified by its leaves; they grow in groups of three and have gently lobed edges.

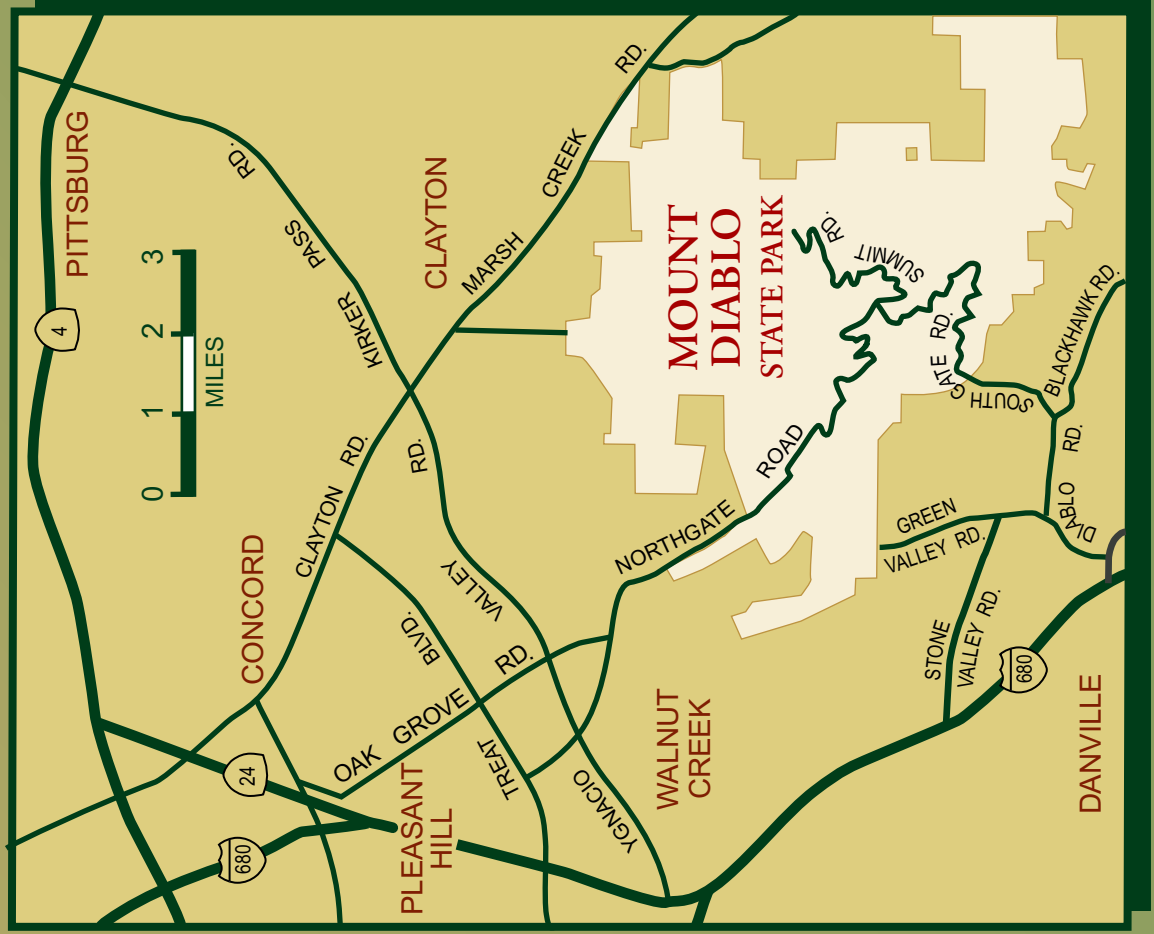
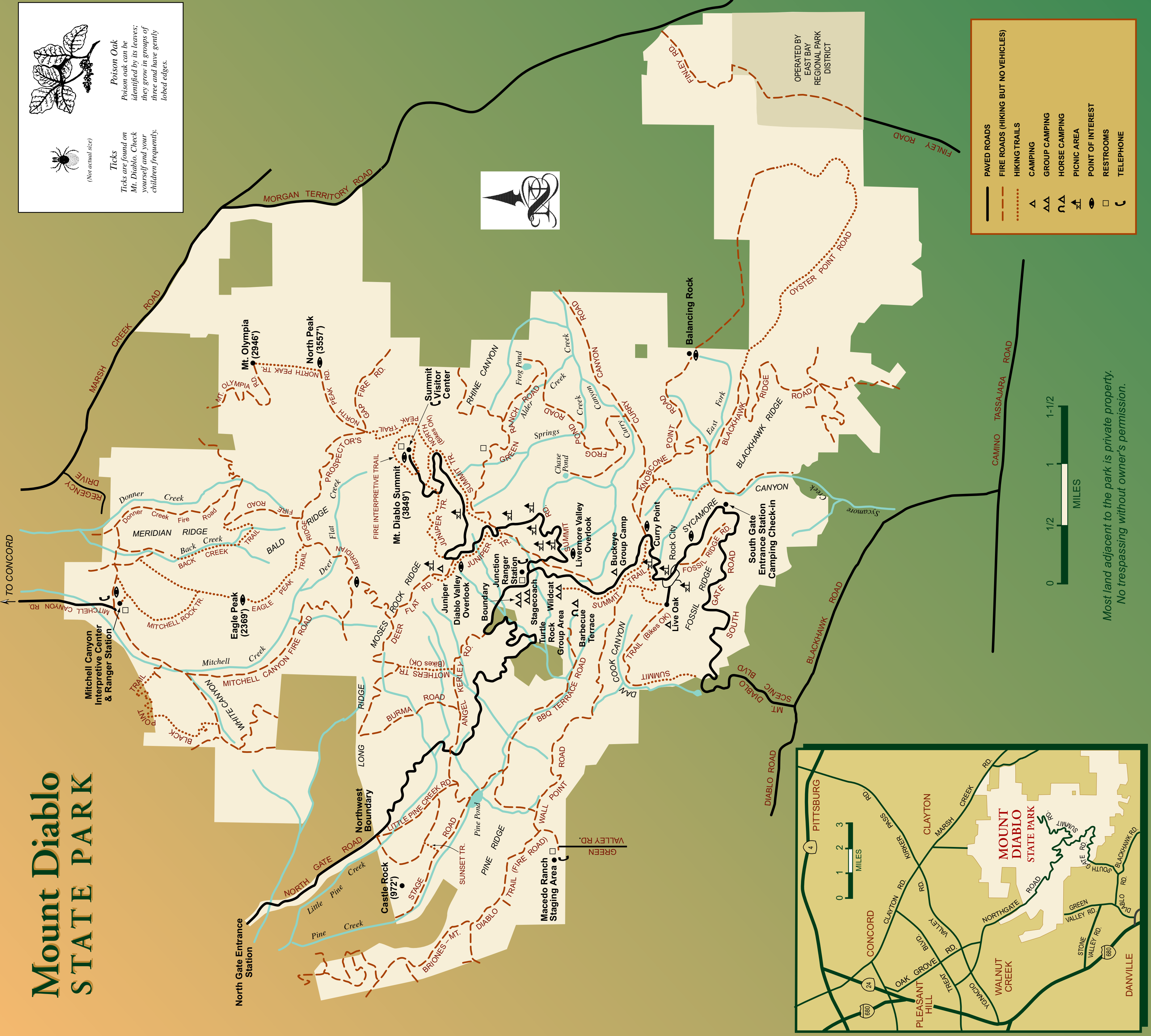


(Not actual size)

Ticks
Ticks are found on Mt. Diablo. Check yourself and your children frequently.



	PAVED ROADS
	FIRE ROADS (HIKING BUT NO VEHICLES)
	HIKING TRAILS
	CAMPING
	GROUP CAMPING
	HORSE CAMPING
	PICNIC AREA
	POINT OF INTEREST
	RESTROOMS
	TELEPHONE



Most land adjacent to the park is private property.
No trespassing without owner's permission.

OPERATED BY
EAST BAY
REGIONAL PARK
DISTRICT